



Technical Data Sheet

Product Profile - Chemical

Nitrohumus®

Product Category:	Composted Soil Conditioner		
Quality System:	ANL-QM-BC		
Formulation:	100% Nitrohumus®		
Grading:	0-15mm		
Analysis:			
<u>General</u>	pH		6.6
	EC		2.55
	Moisture	% D. Wt	50
<u>Elements</u>	Nitrogen		
Major	Total (LECO)	%	1.25
	Total (Kjeldahl)	mg/kg	6800
	N as NO ₃ + NH ₄	mg/kg	210
	Phosphorus	mg/kg	16000
	Potassium	mg/kg	5400
	Calcium	mg/kg	26000
	Magnesium	mg/kg	3900
	Sulphur	mg/kg	4200
Minor	Iron	mg/kg	39000
	Manganese	mg/kg	390
	Copper	mg/kg	270
	Zinc	mg/kg	370
<u>Organic</u>	Carbon		
	Total (LECO)	%	21.66
	Organic Matter	%	45
	C : N ratio		17.1
	Humic Acid	%	8.3
	Fulvic Acid	%	4.6
<u>Metals & Residues</u>	Organochlorins	NSW EPA Grade	A – Unrestricted
	PCB's	NSW EPA Grade	A – Unrestricted
	Heavy Metals	NSW EPA Grade	A – Unrestricted

Nitrohumus® is a 100% recycled product based on green waste and dewatered bio-solids. Material Safety Data Sheets are available on request.

The information is current at the time of publication and applies to this specification manufactured by Australian Native Landscapes. We reserve the right to vary the specification without notice. Australian Native Landscapes Pty Ltd

Disclaimer:

Ph: 13 14 58

ABN: 42 001 749 980

Rev-3-090608



Ph: (02) 9450 1444

Fax: (02) 9450 2428

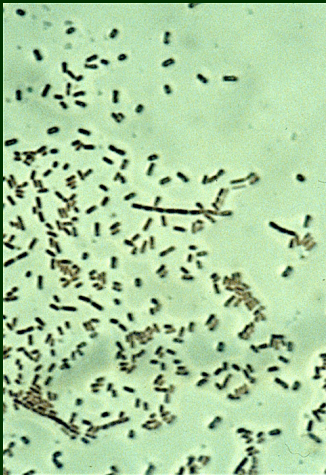
E-Mail - rob@anlscape.com.au

www.anlscape.com.au



Technical Data Sheet Compost Microflora

Nitrohumus®



Product Category: Composted Soil Conditioner
Quality System: ANL-QM-BC

Formulation: 100% Nitrohumus®
Grading: 0-15mm

Microbial Analysis:

<u>Bacterial Biomass</u>	Active Bacteria (AB)	µg/g	158
	Total Bacteria (TB)	µg/g	3847
<u>Fungal Biomass</u>	Active Fungi (AF)	µg/g	9.68
	Total Fungi (TF)	µg/g	91.4
	Hyphal Diameter	mm	2.5
<u>Protozoa</u>	Flagellates	/g	853
	Amoeba	/g	59
	Ciliates	/g	85
<u>Nematodes</u>	Nematodes	/g	1.5
<u>Organism Biomass Ratio</u>	TF : TB		0.02
	AF : AB		0.06
	AF : TF		0.11
	AB : TB		0.04

NB: Material Safety Data Sheets are available on request.

Disclaimer:

The information contained in this technical specification is current at the time of publication and applies to this specification manufactured by Australian Native Landscapes. We reserve the right to vary the specification without notice.

Australian Native Landscapes Pty Ltd

Ph: 13 14 58

ABN: 42 001 749 980

Rev-3-090608

Ph: (02) 9450 1444

Fax: (02) 9450 2428

E-Mail - rob@anlscape.com.au

www.anlscape.com.au