



Technical Data Sheet

Product Profile - Chemical

Greenlife "Mulch & Compost"[®]



Product Category:	Composted Soil Conditioner		
Quality System:	AS 4454 - 2003		
Formulation:	100% Greenlife [®]		
Grading:	0-15mm		
Analysis:			
<u>General</u>	pH		6.5-7.5
	EC		<2
	Moisture	% D. Wt	53
<u>Elements</u>	Nitrogen		
Major	Total (LECO)	%	1.18
	Total (Kjeldahl)	mg/kg	6900
	N as NO ₃ + NH ₄	mg/kg	74
	Phosphorus	mg/kg	1900
	Potassium	mg/kg	7900
	Calcium	mg/kg	15000
	Magnesium	mg/kg	3000
	Sulphur	mg/kg	1500
Minor	Iron	mg/kg	12000
	Manganese	mg/kg	280
	Copper	mg/kg	67
	Zinc	mg/kg	<200
<u>Organic</u>	Carbon		
	Total (LECO)	%	28.57
	Organic Matter	%	58.27
	C : N ratio		24.1
	Humic Acid	%	13.5
	Fulvic Acid	%	14.3
<u>Metals & Residues</u>	Organochlorins	NSW EPA Grade	A – Unrestricted
	PCB's	NSW EPA Grade	A – Unrestricted
	Heavy Metals	NSW EPA Grade	A – Unrestricted

Greenlife-15 is a 100% recycled product based on green waste .Material Safety Data Sheets are available on request.

Disclaimer: The information is current at the time of publication and applies to this specification manufactured by Australian Native Landscapes. We reserve the right to vary the specification without notice. Australian Native Landscapes Pty Ltd

Ph: 13 14 58 ABN: 42 001 749 980

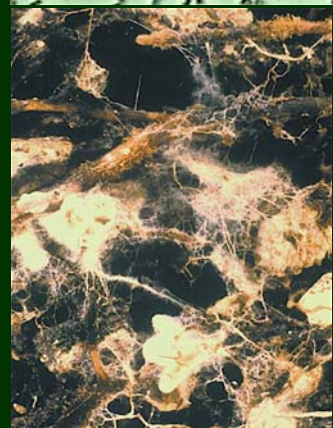
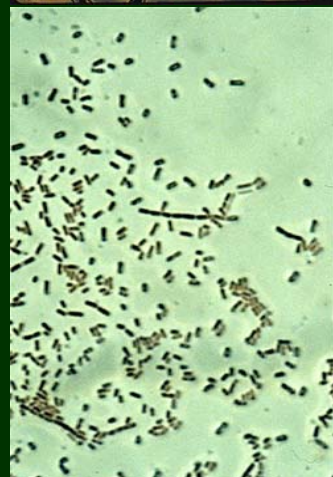
Rev-3-090608

Ph: (02) 9450 1444
 Fax: (02) 9450 2428
 E-Mail - rob@anlscape.com.au
www.anlscape.com.au



Technical Data Sheet Compost Microflora

Greenlife ' Mulch & Compost'®



Product Category: Composted Soil Conditioner
Quality System: ANL-QM-BC

Formulation: 100% Greenlife®
Grading: 0-15mm

Microbial Analysis:

<u>Bacterial Biomass</u>	Active Bacteria(AB)	µg/g	124
	Total Bacteria (TB)	µg/g	4023

<u>Fungal Biomass</u>	Active Fungi (AF)	µg/g	3.71
	Total Fungi (TF)	µg/g	71.6
	Hyphal Diameter	mm	2.5

<u>Protozoa</u>	Flagellates	/g	91
	Amoeba	/g	916
	Ciliates	/g	811

<u>Nematodes</u>	Nematodes	/g	0.02
-------------------------	-----------	----	------

<u>Organism Biomass Ratio</u>	TF : TB	0.02
	AF : AB	0.05
	AF : TF	0.03
	AB : TB	0.03

NB: Material Safety Data Sheets are available on request.

Disclaimer:

The information contained in this technical specification is current at the time of publication and applies to this specification manufactured by Australian Native Landscapes. We reserve the right to vary the specification without notice.

Australian Native Landscapes Pty Ltd

Ph: 13 14 58

ABN: 42 001 749 980

Rev-3-090608

Ph: (02) 9450 1444

Fax: (02) 9450 2428

E-Mail - rob@anlscape.com.au

www.anlscape.com.au